



# Newsletter

Friday 10<sup>th</sup> November 2023

**GREENHEART**  
LEARNING PARTNERSHIP

Pye Green Academy  
Rosehill,  
Cannock,  
Staffordshire  
WS12 4RT

Tel: 01543 227175

Menu for week commencing  
13/11/2023 showing on last page  
newsletter

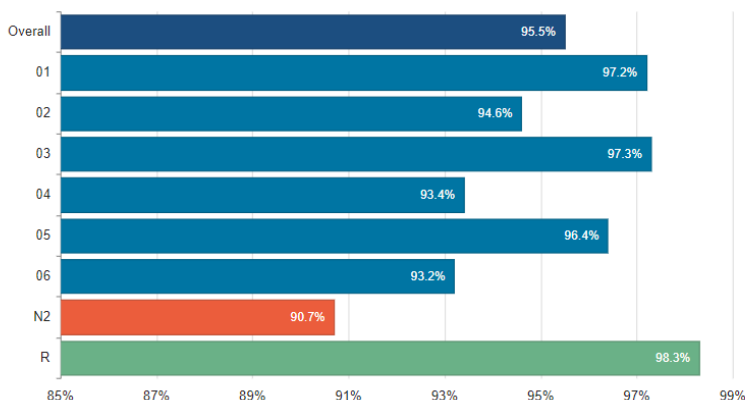
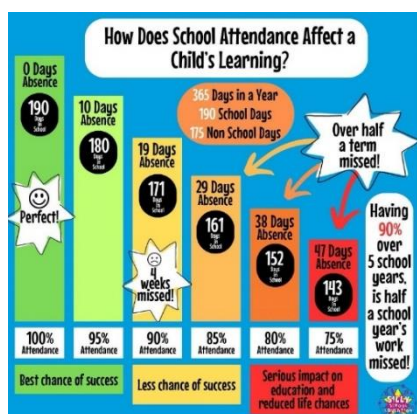
[enquiries@pga.greenheartlearning.org](mailto:enquiries@pga.greenheartlearning.org)

## Attendance

Congratulations to **Reception** for having the best attendance this week at **98.3% This is amazing!**

Overall, school attendance stands at **95.55%** this week.

Hopefully we can see an increase in this figure again next week as classes try to get as high as Reception.



Next week, I would love to see the following year groups achieving these target attendance percentages.

Nursery	95%
Reception	99%
Year 1	98%
Year 2	97%
Year 3	98%
Year 4	96%
Year 5	97%
Year 6	96%

## Celebration Assembly

Today, we held a Celebration Assembly with Years 1, 2 and 3 coming together to share successes.

**Congratulations to**  
**Harrison, Nancy, Jacob, Grace, Cole, Amelia, Zeon, Delylah,**  
**Oscar, Miller, Imogen, Freya and Ollie**



## House Points Reward

During last term, pupils collected house points for their team for following our school values and motto '**Be kind, Be safe, Believe – Achieve.**' These were counted each week and a cumulative total kept.

Red	2734
Yellow	3226
Green	3283
Blue	3291



This afternoon, children across the school in blue team were treated to a film afternoon as a reward for their efforts. I wonder which team will earn the reward at the end of this term?



## What's New?

### Pye Green Values

Healthy  
Eco Aware  
Accepting  
Respectful  
Truthful

Within school, we teach our pupils the importance of following shared values. At its heart, its principles are simple, yet have a profound impact on our learners, school and on the wider community. We have decided upon 5 key values which spell out the word HEART in order to make them more memorable for the pupils.

As part of Greenheart Learning Partnership, these values will be at the heart of all we do within school. Pupils had an input on deciding which values they believed were most important and engaged in an assembly this week discussing which behaviours each value would incorporate.



### Greenhouse

We are pleased that our new greenhouse has now been installed. We hope to start growing some winter crops soon. If there are any 'green-fingered' parents, grandparents or other family members who would be willing to spend some time working alongside some of our pupils in the greenhouse this term that would be fantastic. If you do have a few hours spare and would like to volunteer, please contact the school office on 01543 227175 for a chat with Mrs Yates.



## Children in Need Friday 17<sup>th</sup> November

The school council would like to raise money for Children in Need.

We are having a 'Spotacular Non-Uniform Day' please come to school wearing anything spotty. The more spots the better - we will have prizes for the people with the most spots!

Please feel free to donate using the QR codes around school.



## Celebrating Reading

We are looking to showcase our pupils enjoying reading a variety of texts! Please send a photograph of your child reading to



[ledkins@pga.greenheartlearning.org](mailto:ledkins@pga.greenheartlearning.org) for us to share on our reading display.

We look forward to seeing your photographs – please encourage pupils to be as creative as possible!

## The Importance of Sleep

Sleep is essential to brain function. By helping children to sleep better, we can help them to succeed in school.

At any given time, up to 40% of adults and 50% of children (this rises to 80% with a SEND diagnosis) have difficulties with their sleep. Yet in a recent survey, almost 60% of adults felt there was a lack of support for sleep issues. Sleep problems can leave people feeling isolated and lonely.

A free helpline, run by trained sleep advisors many of whom are specialists in working with SEND can talk with you about any sleep related problems.

The helpline is open 5 times a week, Monday, Tuesday, Thursday evenings 7-9pm, and Monday, Wednesday mornings 9-11am. The number is 03303 530 541.

You can read more here: <https://thesleepcharity.org.uk/national-sleep-helpline/>

## Operation Christmas Child

This year, we are supporting 'Operation Christmas Child'. This charity, Samaritan's Purse, send shoeboxes full of gifts to children in need across the world who otherwise may not receive any gifts this Christmas. Letters have been sent out to each child explaining more about how we as a school can help. Thank you for your support.



### Wellingtons

If any parents have any spare wellingtons that children have grown out of, we would appreciate any donations in school for use in Forest School. Thank you.



### Tempest Photographs

Tempest photographers will return on **Wednesday 22nd November** to take photographs for pupils who were absent on 19/10/2023.

More details to follow.



### Parking

Once again, we have received complaints from residents with regards to inconsiderate parking in the local area. Please be respectful when dropping pupils off at school and collecting them. Please also try to avoid parking on grassy areas as it creates muddy, unsightly patches which then affect the look of the local area.



### KS1 Library

The mural in the library is really coming to life now. The children have loved watching Beth, our artist, paint the characters and have been asking her lots of questions about her amazing talent.



### Free Uniform

We still have lots of brand new, free uniform available. If any families could make use of it, please contact Mrs Snell or Mrs Downing for further information.

[cdowning@pga.greenheartlearning.org](mailto:cdowning@pga.greenheartlearning.org)

[tsnell@pga.greenheartlearning.org](mailto:tsnell@pga.greenheartlearning.org)



### One Stop Rosehill – Thank You

We would like to express our continued thanks to Becky at One Stop for arranging a daily delivery of bread to help support our Breakfast Club. Your generosity is very much appreciated 😊



## Let's Get Talking



What can your children tell you about this image?

## Upcoming Events – More Details to Follow

Friday 10<sup>th</sup> November – School Council Dinner Menu Takeover  
Friday 17<sup>th</sup> November – Non uniform day – Children in Need  
Monday 13<sup>th</sup> November – Anti Bullying Week Begins  
Monday 13<sup>th</sup> November – Anti Bullying Assembly (Kingsmead Students Presenting)  
Friday 17<sup>th</sup> November – Y1 Museum Trip  
Thursday 23<sup>rd</sup> November – DT Parent Workshop (provisional date)  
Friday 24<sup>th</sup> November – Y2 Museum Visit (provisional date)  
Wednesday 29<sup>th</sup> November – Reception Come Dine with Me (further details to follow)  
Saturday 2<sup>nd</sup> December – Hednesford Christmas Event 12-6pm  
Wednesday 6<sup>th</sup> December – Reception Christmas Production at 10.00am  
Friday 8<sup>th</sup> December – Non-Uniform Day (Donation for the Christmas Fair)  
Monday 11<sup>th</sup> December - KS2 Christmas Concert  
Tuesday 12<sup>th</sup> December - KS2 Christmas Concert  
Wednesday 13<sup>th</sup> December – Christmas Dinner Day  
Wednesday 13<sup>th</sup> December Y1 Christmas Production at 9.30am  
Thursday 14<sup>th</sup> December – Nursery Sing Along (more details to follow)  
Friday 15<sup>th</sup> December – PTFA Christmas Fair 3.30-5.00pm  
Tuesday 19<sup>th</sup> December – Whole School Pantomime (kindly funded by the PTFA) and Christmas Jumper Day  
Wednesday 20<sup>th</sup> December – Y2 Christmas Production 2.00pm

**Thursday 21<sup>st</sup> December – Break up for Christmas**

**Friday 22<sup>nd</sup> December – INSET Day**

Friday 12<sup>th</sup> January – Young Voices Concert  
Wednesday 24<sup>th</sup> January – Year 1 Come Dine with Me (further details to follow)  
Wednesday 28<sup>th</sup> February – Year 2 Come Dine with Me (further details to follow)  
Wednesday 20<sup>th</sup> March – Year 3 Come Dine with Me (further details to follow)  
Wednesday 24<sup>th</sup> April – Year 4 Come Dine with Me (further details to follow)  
Wednesday 22<sup>nd</sup> May – Year 5 Come Dine with Me (further details to follow)  
Wednesday 10<sup>th</sup> July – Y6 Come Dine with Me (further details to follow)



## School Year 2023 to 2024

### Autumn Term 2023

Term ends: Friday 22nd December

**Holiday: Monday 25th December - Friday 5th January**

Friday 22<sup>nd</sup> December - Inset day, school closed to children (INSET DAY 3)

### Spring Term 2024

Monday 8th January - Inset day, school closed to children (INSET DAY 4 – TBC)

Term Starts: Tuesday 9th January

**Half Term: Monday 12<sup>th</sup> February – Friday 16<sup>th</sup> February**

Term Ends: Friday 22<sup>nd</sup> March

**Holiday: Monday 25<sup>th</sup> March – Friday 5<sup>th</sup> April**

### Summer Term 2024

Term Starts: Monday 8<sup>th</sup> April

**May Day: Monday 6<sup>th</sup> May**

**Holiday: Monday 27<sup>th</sup> May – Friday 31<sup>st</sup> May**

Term Ends: Friday 19<sup>th</sup> July

Monday 22<sup>nd</sup> July - Inset day, school closed to children (INSET DAY 5)

**Holiday: Monday 22<sup>nd</sup> July – Friday 30<sup>th</sup> August**

**Week One Date W/C 13/11/2023**

Primary Menu Week 1	MONDAY	TUESDAY	WEDNESDAY	THURSDAY	FRIDAYS
Main Course (Red)	Pork Sausages & gravy Mashed Potatoes	BBQ Chicken Pasta Diced Potatoes	Roast Chicken, Roast Potatoes, Stuffing & Gravy	Spaghetti Bolognaise Garlic & Herb Bread	Chicken Nuggets Potato Crunchies Pasta
Vegetarian Main Course (Green)	Pasta Neapolitan Crusty Bread	Vegan Sausage Roll Pasta Diced Potatoes	Vegetarian Sausage	Vegan Nuggets Potato Wedges	Cheese & Tomato Pizza Potato Crunchies Pasta
Yellow	Jacket Potato with Cheese, Baked Beans	Jacket Potato with Cheese, Baked Beans	Jacket Potato with Cheese, Baked Beans	Jacket Potato with Cheese, Baked Beans	Jacket Potato with Cheese, Baked Beans
Vegetables	Sweetcorn, Broccoli, Baked Beans	Green Beans, Cauliflower, Baked Beans	Baked Beans, Fresh Carrots, Garden Peas	Garden Peas, Broccoli, Baked Beans	Sweetcorn, Green Beans, Baked Beans
Sandwich Option (Blue)	Ham Packed Lunch	Cheese Packed Lunch	Tuna Packed Lunch	Ham Packed Lunch	Cheese Packed Lunch
Dessert	Angel Delight Choc Vanilla Mousse	Waffle	Iced Cake with sprinkles	Cookie Selection	A selection of chilled frozen & fresh fruit desserts